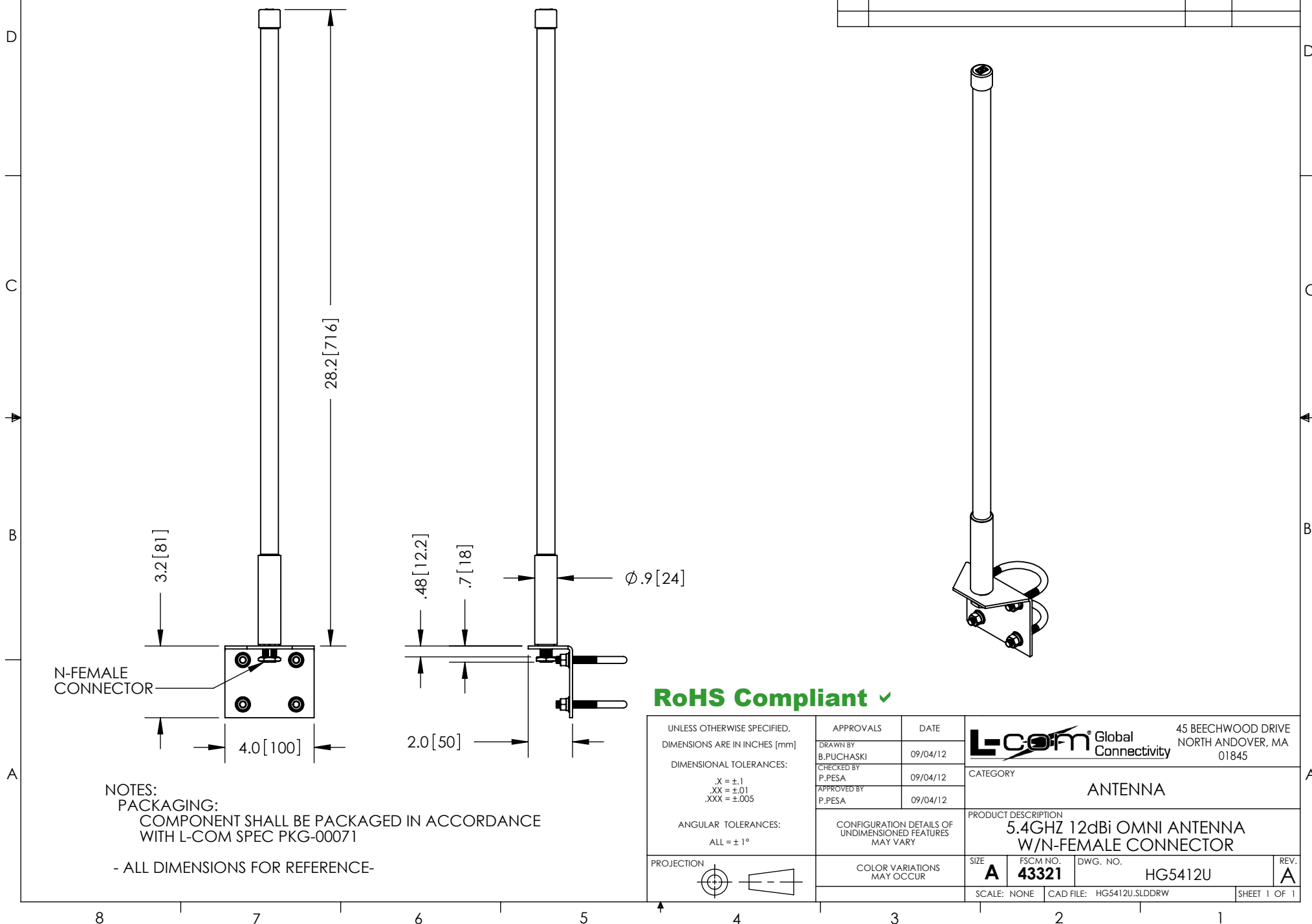
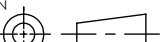


THE INFORMATION CONTAINED IN THIS DRAWING IS THE SOLE  
PROPERTY OF L-COM, INC. ANY REPRODUCTION IN PART OR WHOLE  
WITHOUT THE WRITTEN PERMISSION OF L-COM, INC. IS PROHIBITED.

REVISIONS			
REV	DESCRIPTION	DATE	APPROVED
A	INITIAL RELEASE	9/5/12	D.GRIFFIN



**RoHS Compliant** ✓

UNLESS OTHERWISE SPECIFIED, DIMENSIONS ARE IN INCHES [mm]  DIMENSIONAL TOLERANCES:  .X = ±.1 .XX = ±.01 .XXX = ±.005  ANGULAR TOLERANCES:  ALL = ± 1°	APPROVALS	DATE	<div><div><div>L-com®</div><div>Global Connectivity</div></div><div>45 BEECHWOOD DRIVE NORTH ANDOVER, MA 01845</div></div>			
	DRAWN BY B.PUCHASKI	09/04/12				
	CHECKED BY P.PESA	09/04/12	CATEGORY	ANTENNA		
	APPROVED BY P.PESA	09/04/12				
PROJECTION 	CONFIGURATION DETAILS OF UNDIMENSIONED FEATURES MAY VARY		PRODUCT DESCRIPTION 5.4GHZ 12dBi OMNI ANTENNA W/N-FEMALE CONNECTOR			
			SIZE A	FSCM NO. 43321	DWG. NO. HG5412U	REV A
	COLOR VARIATIONS MAY OCCUR		SCALE: NONE		CAD FILE: HG5412U.SLDDRW	